



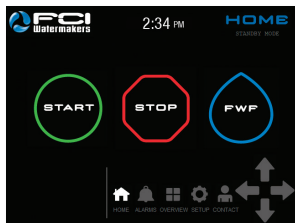
Model AT25263+APC Shown

- KEY FEATURES:**
- 1 HP 316SS Feed Pump
  - 40 sq ft of 5 Micron Filtration
  - Robust 316SS HP Pump
  - Wash-down Duty Motors
  - Dual Shockmounting
  - Exclusive V4 Control System
  - Marine Certified HMI Touch Screen
  - One-Piece Aluminum Powder Coated Frame Construction
  - Fully Automatic Operation with APC
  - Entire Series Is Upgradeable To 3,600 GPD

**BRIDGING THE GAP  
BETWEEN SMALL AND MIGHTY.**

The Atlas+ Series is the most compact commercial system FCI has to offer. Built on the smaller, marine Max-Q+ platform, it has all the working benefits of its much larger, industrial Neptune+ sibling. The Atlas+ Series is capable of producing 1,400–3,600 GPD, and is upgradeable throughout the series. The Automated Pressure Control (APC) with manual override puts making pure fresh water, literally, a touch away. At the heart of the system is a durable wash-down duty, 5 HP motor and a robust 316 stainless steel high pressure pump that allow for extended run times. When installation space or generator size is limited, the Atlas+ Series truly encompasses the best of both pleasure boating and commercial worlds.

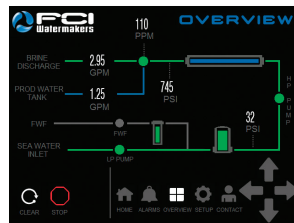
For nearly three decades, FCI Watermakers has been pioneering technologies and manufacturing the most reliable, trouble-free watermaking systems for the offshore and boating industries. Each unit is manufactured and live-tested in our facility. Your system comes with peace of mind, and a readily available customer service and technical support team. Our worldwide service network ensures proper maintenance, and unrivaled satisfaction.



**HMI TOUCH CONTROLS**  
Simple one-touch operation, and intuitive interface.



**EASY SETUP AND CONFIGURATION**  
Icons and simple navigation make customizing your system effortless.



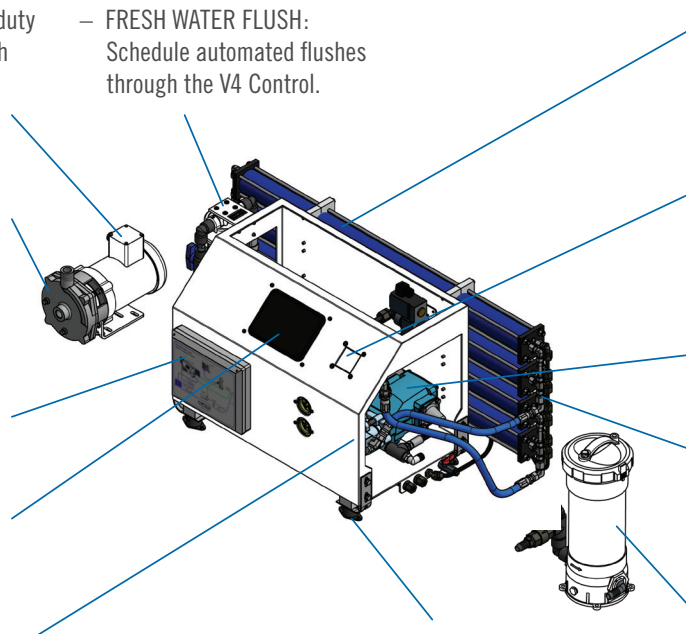
**QUICK VIEW** – Monitor system operation and operational stats, or connect via MODBUS.



**ROBUST PUMP AND MOTOR DRIVE**  
Extended-duty, 316 stainless steel commercial High-Pressure Pump.

**ATLAS+APC SYSTEM FEATURES:**

- MOTORS: TEFC continuous-duty washdown rated motors with 316SS shaft, and sealed maintenance-free bearings for long life applications.
- LP FEED PUMP: Closed impeller design offers 50% more pressure efficiency over standard pumps.
- ELECTRICAL: NEMA 4X rated enclosure.
- HMI TOUCH SCREEN: 7" High-resolution, Marine Grade and Bridge Certified.
- OPEN FRAME DESIGN: Allows easy visual inspection and access for maintenance.
- FRESH WATER FLUSH: Schedule automated flushes through the V4 Control.
- MEMBRANES: High Rejection non-proprietary membranes used to obtain the highest quality of product water.
- AUTOMATIC PRESSURE CONTROL (APC): Auto-adjusts system pressure to feed water conditions.
- HIGH PRESSURE PUMP: Extended-duty 316SS HP pump.
- PRODUCT VESSELS: 316 SS product/pressure ports, and FDA/NSF-51 fittings used on the product water.
- PRE-FILTER: 40 sq. ft. of pleated filter with PVC core in addition to pressure monitoring and alarming.
- SHOCK MOUNTS: Installed on frame and motor to reduce noise and vibration.



**DESIGN PARAMETERS**

Design Permeate Salinity:	< 500ppm
Salt Rejection (Chloride):	99.7%
Power:	4.47kW
Control Voltage:	24 vdc
Operation Pressure:	825 PSI/56 Kg/cm <sup>2</sup>

**POWER SUPPLY OPTIONS**

VAC/Phase/Hz	208-220/3/60	Amperes:	16.7
	440-460/3/60		8.5
	380-415/3/50		10.5

**UTILITIES**

Inlet:	1" FNPT
Brine:	5/8" Tube
Product:	1/2" Tube
FWF:	1/2" Tube

MODEL	GPD/LPD	GPH/LPH	M3	RECOVERY RATE %	WEIGHT LBS/KG
AT14263+/ AT14263+APC	1,400 / 5,298	58 / 221	5	13	212 / 96.2
AT20263+/ AT20263+APC	2,000 / 7,568	83 / 315	8	19	226 / 102.5
AT25263+/ AT25263+APC	2,500 / 9,460	104 / 394	9	23	240 / 108.9
AT28263+/ AT28263+APC	2,800 / 10,595	117 / 441	11	26	326 / 147.9
AT36263+/ AT36263+APC	3,600 / 13,622	150 / 568	14	34	369 / 167.4

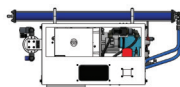
NOTE: Ratings based on 77°F/25°C; 35,000 TDS; <3 SDI; 7.5 pH; Free Chlorine max 0.1 mg/l.

**DIMENSIONS**



**FRAME WIDTH**

FRAME ONLY	31.60 in.
WITH FILTER	37.20 in.
WITH MEMBRANES	47.00 in.
1400-2500 GPD	
WITH MEMBRANES	54.5 in.
2800 GPD Unit	



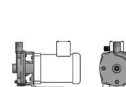
**FRAME DEPTH**

FRAME ONLY	18.20 in.
WITH MEMBRANES	22.50 in.
Units up to 2800 GPD	



**FRAME HEIGHT**

H	20.50 in.
---	-----------



**LP PUMP**

w	6.9 in.
d	13.5 in.
H	9.1 in.



**PRE-FILTER**

w	11.1 in.
d	9.6 in.
H	19.0 in.



**3600 PV ASSEMBLY**  
Includes Wall-mounting Bracket

w	54.6 in.
d	7.8 in.
H	25.5 in.



Model ATM28263+APC Shown

**KEY FEATURES:**

- 1 HP 316SS Feed Pump
- 40 sq ft of 5 Micron Filtration
- Robust 316SS HP Pump
- Wash-down Duty Motors
- Dual Shockmounting
- Exclusive V4 Control System
- Marine Certified HMI Touch Screen
- Fully Automatic Operation with APC
- Entire Series Is Upgradeable To 3,600 GPD
- Also available in Framed Configurations

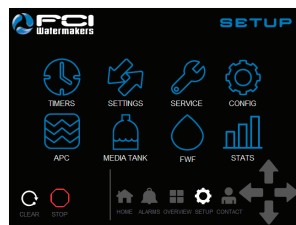
**BRIDGING THE GAP  
BETWEEN SMALL AND MIGHTY.**

The Atlas+ Series is the most compact commercial system FCI has to offer. Built on the smaller, marine Max-Q+ platform, it has all the working benefits of its much larger, industrial Neptune+ sibling. The Atlas+ Series is capable of producing 1,400–3,600 GPD, and is upgradeable throughout the series. The Automated Pressure Control (APC) with manual override puts making pure fresh water, literally, a touch away. At the heart of the system is a durable wash-down duty, 5 HP motor and a robust 316 stainless steel high pressure pump that allow for extended run times. When installation space or generator size is limited, the Atlas+ Series truly encompasses the best of both pleasure boating and commercial worlds.

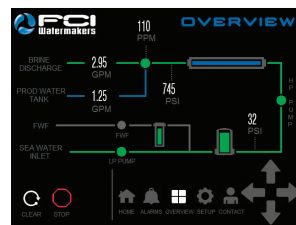
For nearly three decades, FCI Watermakers has been pioneering technologies and manufacturing the most reliable, trouble-free watermaking systems for the offshore and boating industries. Each unit is manufactured and live-tested in our facility. Your system comes with peace of mind, and a readily available customer service and technical support team. Our worldwide service network ensures proper maintenance, and unrivaled satisfaction.



**HMI TOUCH CONTROLS**  
Simple one-touch operation, and intuitive interface.



**EASY SETUP AND CONFIGURATION**  
Icons and simple navigation make customizing your system effortless.



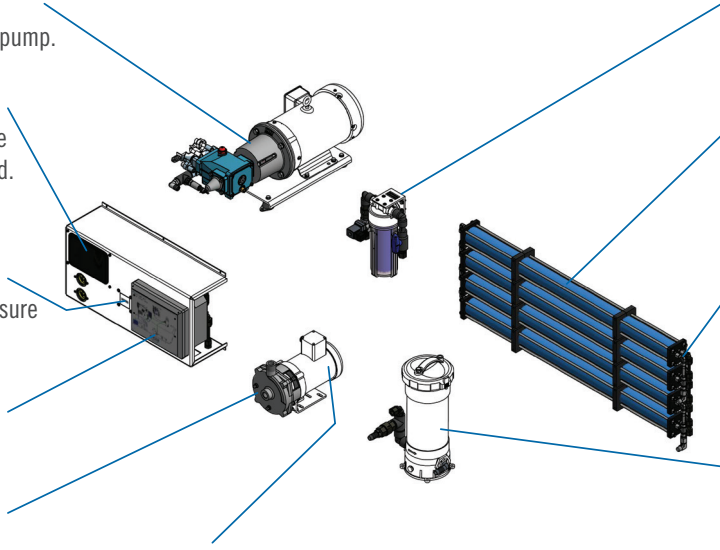
**QUICK VIEW** – Monitor system operation and operational stats, or connect via MODBUS.



**ROBUST PUMP AND MOTOR DRIVE**  
Extended-duty, 316 stainless steel commercial High-Pressure Pump.

**ATLAS+APC SYSTEM FEATURES:**

- HIGH PRESSURE PUMP: Extended-duty 316SS HP pump.
- HMI TOUCH SCREEN: 7" High-resolution, Marine Grade and Bridge Certified.
- AUTOMATIC PRESSURE CONTROL (APC): Auto-adjusts system pressure to feed water conditions.
- ELECTRICAL: NEMA 4X rated enclosure.
- LP FEED PUMP: Closed impeller design offers 50% more pressure efficiency over standard pumps.
- MOTORS: TEFC continuous-duty washdown rated motors with 316SS shaft, and sealed maintenance-free bearings for long life applications.
- FRESH WATER FLUSH: Schedule automated flushes through the V4 Control.
- MEMBRANES: High Rejection non-proprietary membranes used to obtain the highest quality of product water.
- PRODUCT VESSELS: 316SS product/pressure ports, and FDA/NSF-51 fittings used on the product water.
- PRE-FILTER: 40 sq. ft. of pleated filter with PVC core in addition to pressure monitoring and alarming.



**DESIGN PARAMETERS**

Design Permeate Salinity:	< 500ppm
Salt Rejection (Chloride):	99.7%
Power:	4.47kW
Control Voltage:	24 vdc
Operation Pressure:	825 PSI/56 Kg/cm <sup>2</sup>

**POWER SUPPLY OPTIONS**

VAC/Phase/Hz	208-240/3/60	Amperes:	16.7
	460-480/3/60		8.5
	380-415/3/50		10.5

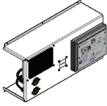

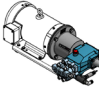

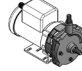
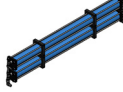

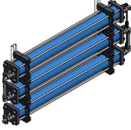
**UTILITIES**

Inlet:	1" FNPT
Brine:	5/8" Tube
Product:	1/2" Tube
FWF:	1/2" Tube

MODEL	GPD/LPD	GPH/LPH	M3	RECOVERY RATE %	WEIGHT LBS/KG
ATM14263+ / ATM14263+APC	1,400 / 5,298	58 / 221	5	13	212 / 96.2
ATM20263+ / ATM20263+APC	2,000 / 7,568	83 / 315	8	19	226 / 102.5
ATM25263+ / ATM25263+APC	2,500 / 9,460	104 / 394	9	23	240 / 108.9
ATM28263+ / ATM28263+APC	2,800 / 10,595	117 / 441	11	26	326 / 147.9
ATM36263+ / ATM36263+APC	3,600 / 13,622	150 / 568	14	34	369 / 167.4

NOTE: Ratings based on 77°F/25°C; 35,000 TDS; <3 SDI; 7.5 pH; Free Chlorine max 0.1 mg/l.

**DIMENSIONS**

							
<b>FLOW PANEL</b>	<b>FRESH WATER FLUSH</b>	<b>HP PUMP</b>	<b>PRE-FILTER</b>	<b>LP PUMP</b>	<b>1400 PV ASSEMBLY</b>	<b>2000 PV ASSEMBLY</b>	<b>2800 PV ASSEMBLY</b> Includes Wall-mounting Bracket
w 26.00 in. d 9.30 in. h 14.50 in.	w 9.10 in. d 6.10 in. h 12.25 in.	w 13.90 in. d 30.40 in. h 10.70 in.	w 11.10 in. d 9.60 in. h 19.00 in.	w 6.90 in. d 13.50 in. h 9.10 in.	w 47.10 in. d 4.00 in. h 9.60 in.	w 47.10 in. d 4.00 in. h 12.50 in.	w 54.50 in. d 6.80 in. h 19.30 in.
						<b>2500 PV ASSEMBLY</b>	<b>3600 PV ASSEMBLY</b> Includes Wall-mounting Bracket
						w 47.10 in. d 4.00 in. h 16.75 in.	w 54.60 in. d 6.80 in. h 27.20 in.